

TOURIST ACCOMMODATION, TASMANIA, SEPTEMBER QUARTER 1994

MAIN FEATURES

SEPTEMBER QUARTER 1994
COMPARED WITH
SEPTEMBER QUARTER 1993

HOTELS, MOTELS AND GUEST HOUSES

- Rooms available increased by 0.9 per cent to 5,316 while room nights occupied increased by 14.1 per cent from 186,239 to 212,455.
- The room occupancy rate rose from 38.5 per cent to 43.5 per cent.
- Guest nights increased by 16.2 per cent to 362,150 and the bed occupancy rate increased from 21.8 per cent to 25.6 per cent.
- Guest arrivals at hotels, motels and guest houses increased by 17.5 per cent to 194,462 while average length of stay was unchanged at 1.9 days.
- Takings from accommodation increased by 18.3 per cent to \$15.2m. Average takings per room night occupied increased from \$69 to \$72.

HOLIDAY FLATS, UNITS AND HOUSES

- The number of units, etc. available for short-term letting increased by 10.7 per cent to 804 while unit nights occupied increased by 11.4 per cent to 31,286.
- The unit occupancy rate increased from 42.0 per cent to 42.5 per cent.
- Unit lettings increased by 18.7 per cent but average length of stay decreased from 2.3 to 2.2 days.
- Accommodation takings increased by 20.7 per cent to \$2.0m. Average takings per unit night occupied increased from \$60 to \$65.

CARAVAN PARKS

- Capacity available increased by 8.8 per cent to 6,924 sites and cabins, etc. while site nights occupied increased by 10.2 per cent from 148,943 to 164,195.
- The site occupancy rate increased by 0.4 percentage points to 25.8 per cent.
- Long-term residents occupied 444 sites, etc. (6.4 per cent) while 1,000 sites (14.4 per cent) were permanently reserved but only casually occupied by their tenants and an average of 341 sites (4.9 per cent) were occupied by other short-term guests.
- Accommodation takings increased by 4.0 per cent to \$1.04m.

VISITOR HOSTELS

- Bed spaces available increased by 19.7 per cent from 1,430 to 1,712.
- Guest nights sold increased from 8,286 to 12,399 and the bed occupancy rate increased from 6.5 per cent to 8.0 per cent.
- Guest arrivals increased from 5,454 to 7,518 while average length of stay increased from 1.5 days to 1.6 days.
- Accommodation takings increased from \$0.09m to \$0.15m while average takings per guest night increased from \$10 to \$12.

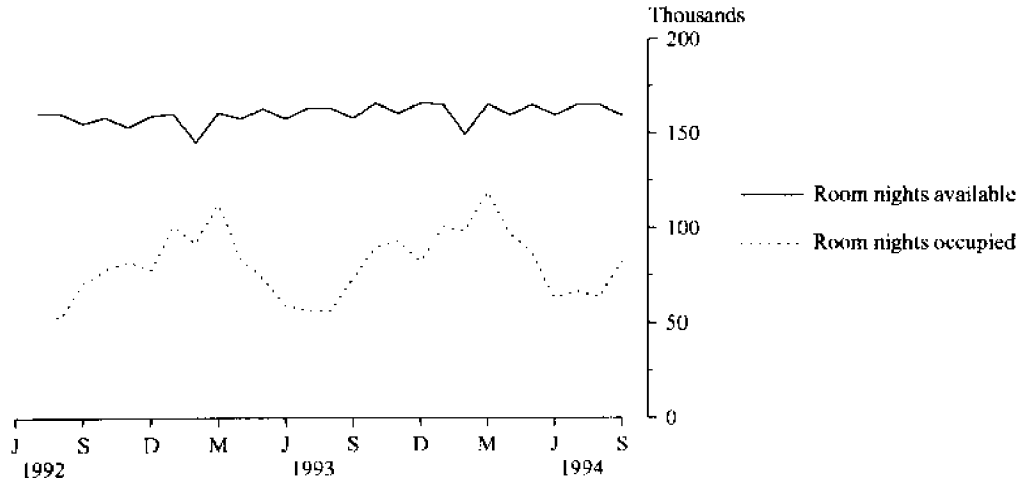
PASSENGER ARRIVALS

- Total arrivals into Tasmania by air and sea for the September quarter 1994 totalled 201,070 which was a 15.2 per cent increase on the September quarter 1993 figure of 174,516.

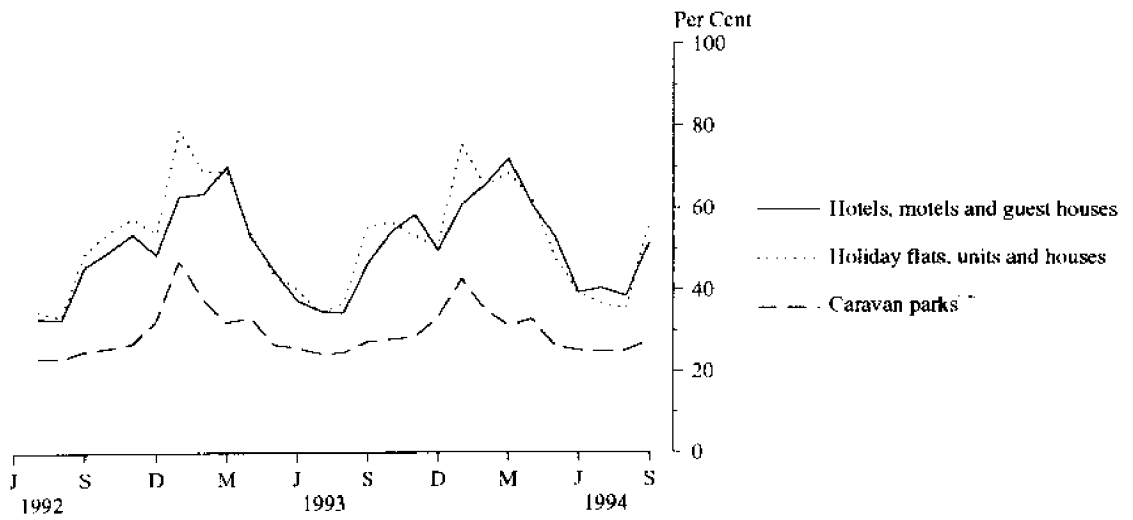
INQUIRIES

- *For inquiries concerning these statistics and the availability of related unpublished statistics, contact Vern Wills on Brisbane 008 077285 or any ABS office.*
 - *For other inquiries including copies of publications, telephone the Information Officer on Hobart (002) 20 5800.*
 - *The Tasmanian Office of the Bureau is located on the first floor, 175 Collins Street, Hobart (GPO Box 66A, Hobart 7001).*
- *****

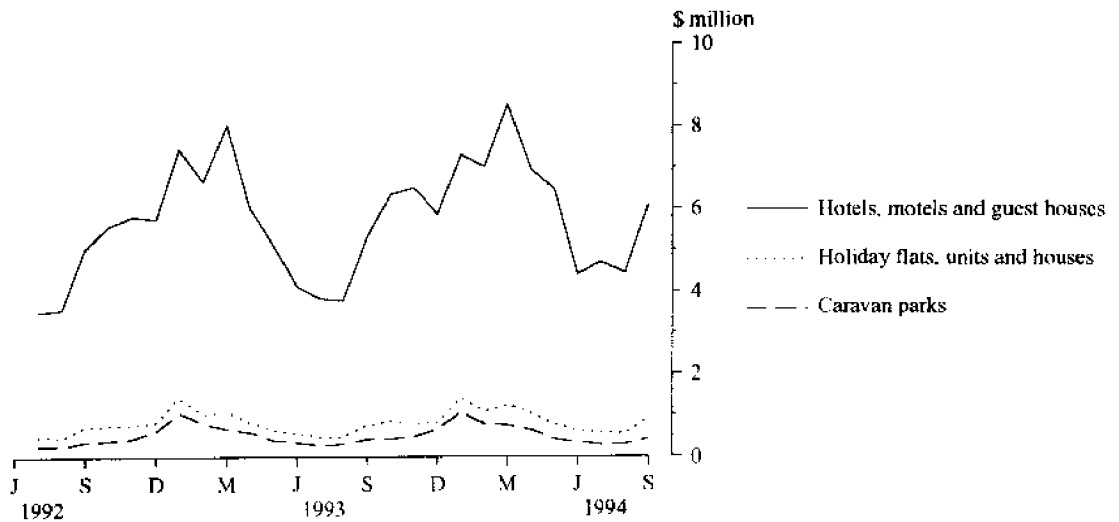
**MONTHLY ROOM NIGHTS AVAILABLE AND OCCUPIED:
HOTELS, MOTELS AND GUEST HOUSES,
TASMANIA**



**MONTHLY OCCUPANCY RATES,
TASMANIA**



**MONTHLY TAKINGS FROM ACCOMMODATION,
TASMANIA**



CONTENTS

<i>Table</i>	<i>Page</i>
" Main features	1
- Diagrams	2
1 Summary of hotels, motels and guest houses with facilities, Tasmania	4
2 Summary of caravan parks, Tasmania	5
3 Summary of holiday flats, units and houses, Tasmania	6
4 Summary of visitor hostels, Tasmania	6
5 Room nights, unit nights and site nights occupied: Seasonally adjusted and trend estimates, Tasmania	7
6 Hotels, motels and guest houses with facilities by star grading, Tasmania	8
7 Hotels, motels and guest houses with facilities by establishment size, Tasmania	9
8 Hotels, motels and guest houses with facilities by statistical division, Tasmania	10
9 Hotels, motels and guest houses with facilities: Statistical divisions and selected statistical local areas, Tasmania	12
" Diagrams: Monthly room/unit occupancy rates	14
10 Holiday flats, units and houses by statistical division and selected statistical areas, Tasmania	16
11 Caravan parks by statistical division and selected statistical areas, Tasmania	17
12 Visitor hostels by statistical division, Tasmania	18
13 Passenger arrivals and departures, Tasmania, interstate and international	19
14 Total passenger arrivals by air and sea into Tasmania: Seasonally adjusted and trend estimates	20
" Explanatory Notes	21

TABLE 1 — SUMMARY OF HOTELS, MOTELS AND GUEST HOUSES WITH FACILITIES, TASMANIA (a)

Particulars	Unit	Quarter ended				Year ended			
		June 1993	September 1993	December 1993	March 1994	June 1994	September 1994	September 1993	September 1994
LICENSED HOTELS WITH FACILITIES									
Establishments	No.	92	92	93	92	91	91
Guest rooms	No.	3,421	3,410	3,510	3,489	3,488	3,513
Bed spaces	No.	9,827	9,831	10,044	9,993	9,961	9,856
Employment (persons)	No.	3,387	3,370	3,410	3,587	3,468	3,474
Room nights occupied	No.	143,539	127,968	175,628	205,931	163,803	145,246	631,661	690,608
Room occupancy rate	per cent	46.1	40.8	54.4	65.6	51.6	45.0	50.7	54.1
Guest nights	No.	243,567	209,261	290,835	370,707	263,797	239,577	1,080,163	1,164,916
Bed occupancy rate	per cent	27.2	23.1	31.5	41.2	29.1	26.4	30.2	32.0
Guest arrivals	No.	125,395	106,744	158,903	201,600	143,788	125,155	553,565	629,446
Average length of stay	days	1.9	2.0	1.8	1.8	1.8	1.9	2.0	1.9
Takings from accommodation	\$'000	10,811	9,500	13,366	15,769	12,660	11,109	48,076	52,904
MOTELS AND GUEST HOUSES WITH FACILITIES									
Establishments	No.	98	98	86	86	86	83
Guest rooms	No.	1,837	1,856	1,832	1,845	1,834	1,803
Bed spaces	No.	5,731	5,721	5,625	5,665	5,617	5,550
Employment (persons)	No.	685	712	774	754	751	747
Room nights occupied	No.	72,437	58,271	89,793	112,094	83,937	67,209	314,822	353,033
Room occupancy rate	per cent	43.4	34.3	53.3	67.5	50.4	40.6	48.3	52.9
Guest nights	No.	134,815	102,277	159,561	219,215	152,442	122,573	582,838	653,791
Bed occupancy rate	per cent	25.9	19.5	30.8	43.0	29.9	24.0	28.7	31.9
Guest arrivals	No.	75,402	58,770	90,835	121,933	86,979	69,307	326,179	369,054
Average length of stay	days	1.8	1.7	1.8	1.8	1.8	1.8	1.8	1.8
Takings from accommodation	\$'000	4,361	3,377	5,294	7,044	5,139	4,120	19,095	21,596
TOTAL HOTELS, MOTELS AND GUEST HOUSES WITH FACILITIES									
Establishments	No.	190	190	179	178	177	174
Guest rooms	No.	5,258	5,266	5,342	5,334	5,322	5,316
Bed spaces	No.	15,558	15,552	15,669	15,658	15,578	15,406
Employment (persons)	No.	4,072	4,082	4,184	4,341	4,219	4,221
Room nights occupied	No.	215,976	186,239	265,421	318,025	247,740	212,455	946,483	1,043,641
Room occupancy rate	per cent	45.1	38.5	54.0	66.2	51.2	43.5	49.8	53.7
Guest nights	No.	378,382	311,538	450,396	589,922	416,239	362,150	1,663,001	1,818,707
Bed occupancy rate	per cent	26.7	21.8	31.2	41.9	29.4	25.6	29.6	32.0
Guest arrivals	No.	200,797	165,514	249,738	323,533	230,767	194,462	879,744	998,500
Average length of stay	days	1.9	1.9	1.8	1.8	1.8	1.9	1.9	1.8
Takings from accommodation	\$'000	15,172	12,878	18,661	22,812	17,799	15,229	67,171	74,500

(a) From December quarter 1993, establishments with fewer than 5 rooms have been formally excluded from the scope of this collection. See Explanatory Note 2 (page 21).

TABLE 2 — SUMMARY OF CARAVAN PARKS, TASMANIA

Particulars	Unit	Quarter ended				Year ended			
		June	September	December	March	June	September	September	September
		1993	1993	1993	1994	1994	1994	1993	1994
SHORT-TERM CARAVAN PARKS									
Establishments	No.	57	54	56	58	58	63
Capacity									
On-site vans	No.	277	255	274	284	284	269
Other powered sites	No.	2,876	2,678	2,782	2,943	2,977	3,085
Unpowered sites	No.	2,104	2,021	2,083	2,197	2,201	2,276
Cabins, etc.	No.	321	257	306	315	319	347
<i>Total capacity</i>	<i>No.</i>	<i>5,578</i>	<i>5,211</i>	<i>5,445</i>	<i>5,739</i>	<i>5,781</i>	<i>5,977</i>
Sites occupied by long-term guests	No.	241	168	210	212	229	260
Other sites permanently reserved	No.	817	881	875	858	944	979
Employment (persons)	No.	174	155	183	184	175	195
Site nights occupied	No.	141,666	120,509	148,173	186,782	147,146	140,206	591,663	622,307
Site occupancy rate	per cent	27.9	25.1	29.6	36.2	28.0	25.5	29.6	29.7
Takings from accommodation	\$'000	1,050	646	1,174	2,120	1,091	819	4,950	5,204
LONG-TERM CARAVAN PARKS									
Establishments	No.	10	13	12	12	12	12
Capacity									
On-site vans	No.	105	136	120	120	117	116
Other powered sites	No.	412	607	524	519	489	500
Unpowered sites	No.	191	286	240	240	225	236
Cabins, etc.	No.	59	126	96	97	96	95
<i>Total capacity</i>	<i>No.</i>	<i>767</i>	<i>1,155</i>	<i>980</i>	<i>976</i>	<i>927</i>	<i>947</i>
Sites occupied by long-term guests	No.	136	217	195	190	178	184
Other sites permanently reserved	No.	55	17	17	16	12	21
Employment (persons)	No.	28	43	41	43	44	37
Site nights occupied	No.	22,826	28,434	29,516	33,447	24,612	23,989	113,608	111,564
Site occupancy rate	per cent	32.7	26.8	32.7	38.1	29.2	27.5	34.8	31.9
Takings from accommodation	\$'000	261	350	415	475	344	217	1,302	1,451
TOTAL CARAVAN PARKS									
Establishments	No.	67	67	68	70	70	75
Capacity									
On-site vans	No.	382	391	394	404	401	385
Other powered sites	No.	3,288	3,285	3,306	3,462	3,466	3,585
Unpowered sites	No.	2,295	2,307	2,323	2,437	2,426	2,512
Cabins, etc.	No.	380	383	402	412	415	442
<i>Total capacity</i>	<i>No.</i>	<i>6,345</i>	<i>6,366</i>	<i>6,425</i>	<i>6,715</i>	<i>6,708</i>	<i>6,924</i>
Sites occupied by long-term guests	No.	377	385	405	402	407	444
Other sites permanently reserved	No.	872	898	892	874	956	1,000
Employment (persons)	No.	202	198	224	227	219	232
Site nights occupied	No.	164,492	148,943	177,689	220,229	171,758	164,195	705,271	733,871
Site occupancy rate	per cent	28.5	25.4	30.1	36.4	28.1	25.8	30.3	30.0
Takings from accommodation	\$'000	1,311	996	1,589	2,595	1,435	1,036	6,252	6,655

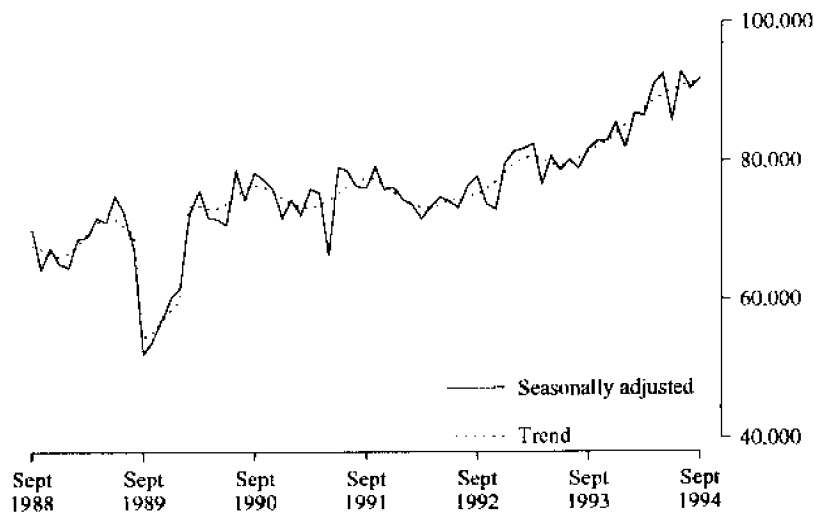
TABLE 3 — SUMMARY OF HOLIDAY FLATS, UNITS AND HOUSES, TASMANIA

<i>Particulars</i>	<i>Unit</i>	<i>Quarter ended</i>				<i>Year ended</i>			
		<i>June 1993</i>	<i>September 1993</i>	<i>December 1993</i>	<i>March 1994</i>	<i>June 1994</i>	<i>September 1994</i>	<i>September 1993</i>	<i>September 1994</i>
Letting entities	No.	45	45	50	53	52	53
Flats, units and houses									
Single bedroom	No.	227	225	257	265	260	264
Multiple bedroom	No.	508	501	514	532	533	540
<i>Total flats, units and houses</i>	<i>No.</i>	<i>735</i>	<i>726</i>	<i>771</i>	<i>797</i>	<i>793</i>	<i>804</i>	<i>..</i>	<i>..</i>
Bed spaces	No.	3,247	3,189	3,366	3,511	3,486	3,533
Employment (persons)	No.	290	283	325	338	313	305
Unit nights occupied	No.	30,816	28,080	37,956	50,280	35,926	31,286	143,182	155,448
Unit occupancy rate	per cent	46.1	42.0	53.5	70.1	49.8	42.5	53.8	53.9
Unit lettings	No.	14,493	12,252	18,137	23,307	16,928	14,542	65,926	72,914
Average length of stay	days	2.1	2.3	2.1	2.2	2.1	2.2	2.2	2.1
Takings from accommodation	\$'000	1,992	1,694	2,450	3,725	2,455	2,044	9,468	10,675

TABLE 4 — SUMMARY OF VISITOR HOSTELS, TASMANIA

<i>Particulars</i>	<i>Unit</i>	<i>Quarter ended</i>				<i>Year ended</i>			
		<i>June 1993</i>	<i>September 1993</i>	<i>December 1993</i>	<i>March 1994</i>	<i>June 1994</i>	<i>September 1994</i>	<i>September 1993</i>	<i>September 1994</i>
Establishments	No.	39	38	38	39	36	41
Bed spaces	No.	1,475	1,430	1,471	1,487	1,450	1,712
Employment (persons)	No.	94	77	94	108	90	95
Guest nights	No.	14,668	8,286	18,937	35,706	15,114	12,399	73,726	82,156
Bed occupancy rate	per cent	10.9	6.5	14.0	26.7	11.5	8.0	14.3	14.8
Guest arrivals	No.	10,425	5,454	13,418	24,992	9,441	7,518	53,335	55,369
Average length of stay	days	1.4	1.5	1.4	1.4	1.6	1.6	1.4	1.5
Takings from accommodation	\$'000	166	87	215	406	175	145	846	941

HOTEL/MOTEL ROOM NIGHTS



HOLIDAY UNIT NIGHTS

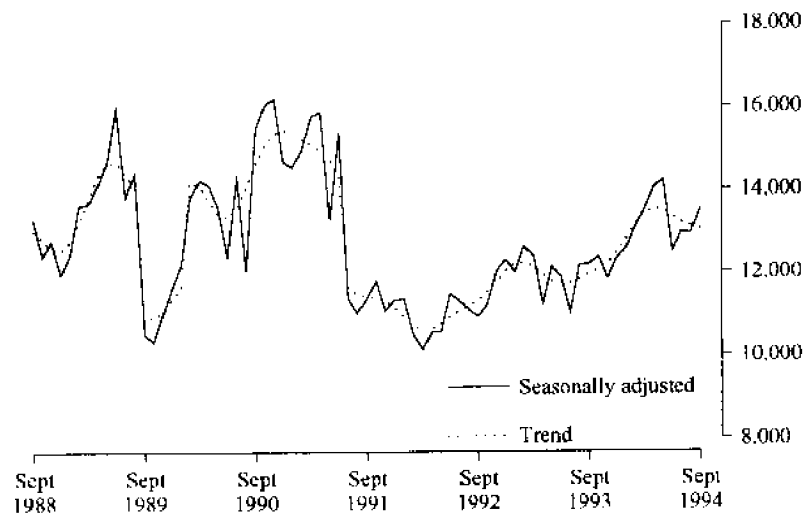


TABLE 5. HOTEL & MOTEL ETC. ROOM NIGHTS, HOLIDAY UNIT NIGHTS AND CARAVAN PARK
SITE NIGHTS: SEASONALLY ADJUSTED AND TREND ESTIMATES

		<i>Hotel, motel etc. with facilities. room nights</i>		<i>Holiday unit nights</i>		<i>Caravan park site nights</i>	
		<i>Seasonally adjusted</i>	<i>Trend</i>	<i>Seasonally adjusted</i>	<i>Trend</i>	<i>Seasonally adjusted</i>	<i>Trend</i>
1992	October	73,798	75,906	11,227	11,534	n.a.	n.a.
	November	73,030	77,031	12,042	11,795	n.a.	n.a.
	December	79,663	78,377	12,316	12,046	n.a.	n.a.
1993	January	81,311	79,586	11,993	12,227	n.a.	n.a.
	February	81,739	80,415	12,640	12,254	n.a.	n.a.
	March	82,458	80,648	12,387	12,134	n.a.	n.a.
	April	76,657	80,251	11,249	11,944	n.a.	n.a.
	May	80,737	79,624	12,133	11,795	n.a.	n.a.
	June	78,670	79,304	11,879	11,736	n.a.	n.a.
	July	80,240	79,630	11,022	11,763	n.a.	n.a.
	August	78,961	80,374	12,183	11,850	n.a.	n.a.
	September	81,774	81,309	12,189	11,965	n.a.	n.a.
	October	82,982	82,178	12,377	12,075	n.a.	n.a.
	November	82,910	82,936	11,835	12,211	n.a.	n.a.
	December	85,522	83,932	12,343	12,455	n.a.	n.a.
1994	January	82,019	85,054	12,573	12,784	n.a.	n.a.
	February	86,846	86,326	13,080	13,144	n.a.	n.a.
	March	86,570	87,638	13,540	13,437	n.a.	n.a.
	April	90,936	88,851	14,041	13,554	n.a.	n.a.
	May	92,534	89,783	14,225	13,496	n.a.	n.a.
	June	85,913	90,429	12,505	13,350	n.a.	n.a.
	July	92,897	90,877	12,974	13,210	n.a.	n.a.
	August	90,625	91,217	12,927	13,110	n.a.	n.a.
	September	91,936	91,544	13,534	13,038	n.a.	n.a.

TABLE 6 — HOTELS, MOTELS AND GUEST HOUSES WITH FACILITIES BY STAR GRADING, TASMANIA (a)

Particulars	Licensed hotels with facilities	Motels and guest houses	Star grading			Total
			1, 2 and Ungraded	3	4 and 5	
ESTABLISHMENTS, CAPACITY AND EMPLOYMENT						
<i>September quarter 1993—</i>						
Establishments	92	98	81	79	30	190
Guest rooms	3,410	1,856	1,324	2,485	1,457	5,266
Bed spaces	9,831	5,721	3,811	7,554	4,187	15,552
Employment (persons)	3,370	712	987	1,236	1,859	4,082
<i>September quarter 1994—</i>						
Establishments	91	83	73	79	22	174
Guest rooms	3,513	1,803	1,368	2,499	1,449	5,316
Bed spaces	9,856	5,550	3,856	7,410	4,140	15,406
Employment (persons)	3,474	747	916	1,340	1,965	4,221
ROOM NIGHTS OCCUPIED						
<i>September quarter 1993</i>	127,968	58,271	35,665	79,037	71,537	186,239
<i>1994—</i>						
July	46,409	20,386	11,841	29,134	25,820	66,795
August	43,783	19,629	11,161	28,028	24,223	63,412
September	55,054	27,194	14,877	37,532	29,839	82,248
<i>September quarter 1994</i>	145,246	67,209	37,879	94,694	79,882	212,455
ROOM OCCUPANCY RATES (per cent)						
<i>September quarter 1993</i>	40.8	34.3	29.4	34.6	53.4	38.5
<i>1994—</i>						
July	42.7	36.6	28.0	37.6	57.6	40.6
August	40.2	35.1	26.3	36.2	54.0	38.5
September	52.2	50.3	36.3	50.1	68.6	51.6
<i>September quarter 1994</i>	45.0	40.6	30.1	41.2	60.0	43.5
GUEST NIGHTS						
<i>September quarter 1993</i>	209,261	102,277	62,703	136,676	112,159	311,538
<i>1994—</i>						
July	76,269	36,736	20,747	50,423	41,835	113,005
August	69,845	34,255	19,351	47,171	37,578	104,100
September	93,463	51,582	27,847	69,375	47,823	145,045
<i>September quarter 1994</i>	239,577	122,573	67,945	166,969	127,236	362,150
BED OCCUPANCY RATES (per cent)						
<i>September quarter 1993</i>	23.1	19.5	17.9	19.7	29.1	21.8
<i>1994—</i>						
July	25.0	21.4	17.4	22.0	32.7	23.7
August	22.9	19.9	16.2	20.5	29.3	21.8
September	31.6	31.0	24.1	31.2	38.5	31.4
<i>September quarter 1994</i>	26.4	24.0	19.2	24.5	33.4	25.6
GUEST ARRIVALS						
<i>September quarter 1993</i>	106,744	58,770	36,540	78,230	50,744	165,514
<i>1994—</i>						
July	38,794	20,489	12,048	27,689	19,546	59,283
August	37,322	20,113	11,588	27,350	18,497	57,435
September	49,039	28,705	16,429	38,967	22,348	77,744
<i>September quarter 1994</i>	125,155	69,307	40,065	94,006	60,391	194,462
AVERAGE LENGTH OF STAY (days)						
<i>September quarter 1993</i>	2.0	1.7	1.7	1.7	2.2	1.9
<i>September quarter 1994</i>	1.9	1.8	1.7	1.8	2.1	1.9
TAKINGS FROM ACCOMMODATION (\$'000)						
<i>September quarter 1993</i>	9,500	3,377	1,814	4,424	6,640	12,878
<i>1994—</i>						
July	3,521	1,190	657	1,649	2,406	4,711
August	3,241	1,202	586	1,599	2,259	4,443
September	4,346	1,728	854	2,286	2,935	6,074
<i>September quarter 1994</i>	11,109	4,120	2,096	5,534	7,599	15,229

(a) From December quarter 1993, establishments with fewer than 5 rooms have been formally excluded from the scope of this collection. See Explanatory Note 2 (page 21).

TABLE 7 — HOTELS, MOTELS AND GUEST HOUSES WITH FACILITIES BY ESTABLISHMENT SIZE, TASMANIA (a)

Particulars	Establishment size (No. of rooms)						Total
	1-9 (a)	10-15	16-25	26-50	51-100	101+	
ESTABLISHMENTS, CAPACITY AND EMPLOYMENT							
<i>September quarter 1993—</i>							
Establishments	56	29	30	50	18	7	190
Guest rooms	324	328	615	1,697	1,157	1,145	5,266
Bed spaces	820	902	1,855	5,018	3,796	3,161	15,552
Employment (persons)	337	325	352	845	893	1,330	4,082
<i>September quarter 1994</i>							
Establishments	38	29	33	48	18	8	174
Guest rooms	267	327	677	1,650	1,146	1,249	5,316
Bed spaces	693	865	2,000	4,889	3,491	3,468	15,406
Employment (persons)	223	344	387	928	583	1,756	4,221
ROOM NIGHTS OCCUPIED							
<i>September quarter 1993</i>	8,854	11,399	18,351	54,612	40,749	52,274	186,239
<i>1994 —</i>							
July	2,306	3,446	6,503	18,243	14,236	22,061	66,795
August	2,344	3,311	5,734	18,747	13,400	19,876	63,412
September	3,114	4,172	8,072	24,794	15,916	26,180	82,248
<i>September quarter 1994</i>	7,764	10,929	20,309	61,784	43,552	68,117	212,455
ROOM OCCUPANCY RATES (per cent)							
<i>September quarter 1993</i>	30.3	37.8	32.4	35.0	38.3	49.6	38.5
<i>1994</i>							
July	28.3	34.6	31.0	35.7	40.1	57.0	40.6
August	28.4	32.7	27.3	36.7	37.7	51.3	38.5
September	38.9	42.5	39.7	50.1	46.3	69.9	51.6
<i>September quarter 1994</i>	31.8	36.5	32.6	40.7	41.3	59.3	43.5
GUEST NIGHTS							
<i>September quarter 1993</i>	13,375	16,971	31,830	92,888	76,098	80,376	311,538
<i>1994</i>							
July	3,831	5,419	11,125	30,737	26,804	35,089	113,005
August	4,146	5,234	9,681	30,954	23,449	30,636	104,100
September	5,648	7,186	15,150	45,325	30,986	40,750	145,045
<i>September quarter 1994</i>	13,625	17,839	35,956	107,016	81,239	106,475	362,150
BED OCCUPANCY RATES (per cent)							
<i>September quarter 1993</i>	18.1	20.5	18.7	20.1	21.8	27.6	21.8
<i>1994</i>							
July	18.0	20.5	17.9	20.3	24.8	32.6	23.7
August	19.4	19.5	15.6	20.4	21.7	28.5	21.8
September	27.2	27.7	25.3	30.9	29.6	39.2	31.4
<i>September quarter 1994</i>	21.5	22.5	19.5	23.8	25.3	33.4	25.6
GUEST ARRIVALS							
<i>September quarter 1993</i>	8,422	9,996	16,942	56,408	41,158	32,588	165,514
<i>1994—</i>							
July	2,466	3,151	6,373	19,534	13,614	14,145	59,283
August	2,772	3,071	5,809	19,506	12,801	13,476	57,435
September	3,620	4,076	8,636	27,614	17,742	16,056	77,744
<i>September quarter 1994</i>	8,858	10,298	20,818	66,654	44,157	43,677	194,462
AVERAGE LENGTH OF STAY (days)							
<i>September quarter 1993</i>	1.6	1.7	1.9	1.6	1.8	2.5	1.9
<i>September quarter 1994</i>	1.5	1.7	1.7	1.6	1.8	2.4	1.9
TAKINGS FROM ACCOMMODATION (\$ '000)							
<i>September quarter 1993</i>	415	543	899	3,105	3,153	4,762	12,878
<i>1994 —</i>							
July	128	166	330	1,057	1,038	1,992	4,711
August	144	156	300	1,062	963	1,819	4,443
September	179	218	433	1,471	1,276	2,497	6,074
<i>September quarter 1994</i>	452	540	1,063	3,590	3,277	6,307	15,229

(a) From December quarter 1993, establishments with fewer than 5 rooms have been formally excluded from the scope of this collection. See Explanatory Note 2 (page 21).

TABLE 8—HOTELS, MOTELS AND GUEST HOUSES WITH FACILITIES BY STATISTICAL DIVISION,
TASMANIA (a)

Particulars	Greater Hobart (SD)			Southern (SD)			Northern (SD)			Total
	Licensed hotels with facilities	Motels and guest houses	Total	Licensed hotels with facilities	Motels and guest houses	Total	Licensed hotels with facilities	Motels and guest houses	Total	
ESTABLISHMENTS, CAPACITY AND EMPLOYMENT										
<i>September quarter 1993</i>										
Establishments	25	30	55	14	12	26	31	25	56	
Guest rooms	1,221	658	1,879	409	101	510	1,072	458	1,530	
Bed spaces	3,198	1,988	5,186	1,308	365	1,673	3,340	1,522	4,862	
Employment (persons)	1,573	228	1,801	225	47	272	1,053	134	1,187	
<i>September quarter 1994</i>										
Establishments	24	27	51	14	9	23	31	21	52	
Guest rooms	1,222	649	1,871	483	98	581	1,089	418	1,507	
Bed spaces	3,199	1,935	5,134	1,460	358	1,818	3,192	1,386	4,578	
Employment (persons)	1,567	288	1,855	235	48	283	1,122	130	1,252	
ROOM NIGHTS OCCUPIED										
<i>September quarter 1993</i>	55,834	24,036	79,870	9,638	1,903	11,541	41,157	15,867	57,024	
<i>1994—</i>										
July	22,638	10,171	32,809	3,242	614	3,856	13,418	4,573	17,991	
August	19,371	8,977	28,348	3,507	531	4,038	13,959	4,762	18,721	
September	24,675	12,249	36,924	4,731	993	5,724	17,562	6,642	24,204	
<i>September quarter 1994</i>	66,684	31,397	98,081	11,480	2,138	13,618	44,939	15,977	60,916	
ROOM OCCUPANCY RATES (per cent)										
<i>September quarter 1993</i>	49.7	39.7	46.2	25.6	21.6	24.9	41.7	37.8	40.5	
<i>1994</i>										
July	60.0	50.9	56.8	21.7	20.2	21.4	39.7	35.3	38.5	
August	51.1	44.7	48.9	23.4	17.5	22.4	41.3	36.7	40.1	
September	67.3	62.9	65.8	32.7	33.8	32.8	53.8	53.0	53.5	
<i>September quarter 1994</i>	59.4	52.7	57.1	25.8	23.7	25.5	44.9	41.5	43.9	
GUEST NIGHTS										
<i>September quarter 1993</i>	85,902	41,829	127,731	19,820	4,084	23,904	67,405	29,497	96,902	
<i>1994—</i>										
July	36,226	18,315	54,541	6,500	1,296	7,796	21,908	8,779	30,687	
August	29,995	15,504	45,499	6,604	1,123	7,727	22,491	8,753	31,244	
September	38,224	22,614	60,838	10,172	2,509	12,681	31,137	13,305	44,442	
<i>September quarter 1994</i>	104,445	56,433	160,878	23,276	4,928	28,204	75,536	30,837	106,373	
BED OCCUPANCY RATES (per cent)										
<i>September quarter 1993</i>	29.2	22.9	26.8	16.5	12.6	15.6	21.9	21.1	21.7	
<i>1994</i>										
July	36.7	30.6	34.4	14.4	11.7	13.8	22.1	20.4	21.6	
August	30.2	25.9	28.6	14.6	10.1	13.7	22.7	20.4	22.0	
September	39.8	39.0	39.5	23.2	23.4	23.3	32.5	32.0	32.4	
<i>September quarter 1994</i>	35.5	31.8	34.1	17.3	15.0	16.9	25.7	24.2	25.3	
GUEST ARRIVALS										
<i>September quarter 1993</i>	32,004	21,716	53,720	14,712	3,013	17,725	37,621	15,818	53,439	
<i>1994</i>										
July	14,889	8,656	23,545	5,015	969	5,984	11,726	5,117	16,843	
August	13,052	7,818	20,870	4,658	817	5,475	12,689	5,501	18,190	
September	15,811	10,861	26,672	7,924	1,638	9,562	16,319	7,519	23,838	
<i>September quarter 1994</i>	43,752	27,335	71,087	17,597	3,424	21,021	40,734	18,137	58,871	
AVERAGE LENGTH OF STAY (days)										
<i>September quarter 1993</i>	2.7	1.9	2.4	1.3	1.4	1.3	1.8	1.9	1.8	
<i>September quarter 1994</i>	2.4	2.1	2.3	1.3	1.4	1.3	1.9	1.7	1.8	
TAKINGS FROM ACCOMMODATION (\$'000)										
<i>September quarter 1993</i>	4,870	1,407	6,276	489	116	605	2,707	854	3,561	
<i>1994—</i>										
July	1,908	574	2,481	182	39	221	911	258	1,169	
August	1,639	531	2,170	171	34	205	970	269	1,240	
September	2,215	734	2,949	263	64	327	1,279	405	1,684	
<i>September quarter 1994</i>	5,761	1,839	7,600	616	136	752	3,161	933	4,093	

TABLE 8 — HOTELS, MOTELS AND GUEST HOUSES WITH FACILITIES BY STATISTICAL DIVISION,
TASMANIA (a)—continued

Particulars	Mersey-Lyell (SD)			Total Tasmania			East Coast (b)
	Licensed hotels with facilities	Motels and guest houses	Total	Licensed hotels with facilities	Motels and guest houses	Total	Total
ESTABLISHMENTS, CAPACITY AND EMPLOYMENT							
<i>September quarter 1993—</i>							
Establishments	22	31	53	92	98	190	15
Guest rooms	708	639	1,347	3,410	1,856	5,266	448
Bed spaces	1,985	1,846	3,831	9,831	5,721	15,552	1,446
Employment (persons)	519	303	822	3,370	712	4,082	221
<i>September quarter 1994—</i>							
Establishments	22	26	48	91	83	174	14
Guest rooms	719	638	1,357	3,513	1,803	5,316	455
Bed spaces	2,005	1,871	3,876	9,856	5,550	15,406	1,441
Employment (persons)	550	281	831	3,474	747	4,221	228
ROOM NIGHTS OCCUPIED							
<i>September quarter 1993</i>	21,339	16,465	37,804	127,968	58,271	186,239	9,870
<i>1994—</i>							
July	7,111	5,028	12,139	46,409	20,386	66,795	3,201
August	6,946	5,359	12,305	43,783	19,629	63,412	3,204
September	8,086	7,310	15,396	55,054	27,194	82,248	4,353
<i>September quarter 1994</i>	22,143	17,697	39,840	145,246	67,209	212,455	10,758
ROOM OCCUPANCY RATES (per cent)							
<i>September quarter 1993</i>	32.8	28.0	30.5	40.8	34.3	38.5	24.0
<i>1994—</i>							
July	31.9	25.4	28.9	42.7	36.6	40.6	22.7
August	31.2	27.1	29.3	40.2	35.1	38.5	22.7
September	37.5	38.2	37.8	52.2	50.3	51.6	31.9
<i>September quarter 1994</i>	33.5	30.2	31.9	45.0	40.6	43.5	25.7
GUEST NIGHTS							
<i>September quarter 1993</i>	36,134	26,867	63,001	209,261	102,277	311,538	20,048
<i>1994—</i>							
July	11,635	8,346	19,981	76,269	36,736	113,005	6,297
August	10,755	8,875	19,630	69,845	34,255	104,100	6,066
September	13,930	13,154	27,084	93,463	51,582	145,045	9,173
<i>September quarter 1994</i>	36,320	30,375	66,695	239,577	122,573	362,150	21,536
BED OCCUPANCY RATES (per cent)							
<i>September quarter 1993</i>	19.8	15.8	17.9	23.1	19.5	21.8	15.1
<i>1994—</i>							
July	18.7	14.4	16.6	25.0	21.4	23.7	14.1
August	17.3	15.3	16.3	22.9	19.9	21.8	13.6
September	23.2	23.4	23.3	31.6	31.0	31.4	21.2
<i>September quarter 1994</i>	19.7	17.6	18.7	26.4	24.0	25.6	16.2
GUEST ARRIVALS							
<i>September quarter 1993</i>	22,407	18,223	40,630	106,744	58,770	165,514	14,204
<i>1994</i>							
July	7,164	5,747	12,911	38,794	20,489	59,283	4,520
August	6,923	5,977	12,900	37,322	20,113	57,435	4,272
September	8,985	8,687	17,672	49,039	28,705	77,744	6,851
<i>September quarter 1994</i>	23,072	20,411	43,483	125,155	69,307	194,462	15,643
AVERAGE LENGTH OF STAY (days)							
<i>September quarter 1993</i>	1.6	1.5	1.6	2.0	1.7	1.9	1.4
<i>September quarter 1994</i>	1.6	1.5	1.5	1.9	1.8	1.9	1.4
TAKINGS FROM ACCOMMODATION (\$'000)							
<i>September quarter 1993</i>	1,434	1,001	2,435	9,500	3,377	12,878	490
<i>1994—</i>							
July	520	319	840	3,521	1,190	4,711	163
August	461	367	829	3,241	1,202	4,443	159
September	590	525	1,115	4,346	1,728	6,074	224
<i>September quarter 1994</i>	1,572	1,212	2,783	11,109	4,120	15,229	546

(a) From December quarter 1993, establishments with fewer than 5 rooms have been formally excluded from the scope of this collection. See Explanatory Note 2 (page 21).

(b) The East Coast Tourist Area comprises Glamorgan/Spring Bay (M) and Break O'Day (M).

TABLE 9 — HOTELS, MOTELS AND GUEST HOUSES WITH FACILITIES: STATISTICAL DIVISIONS

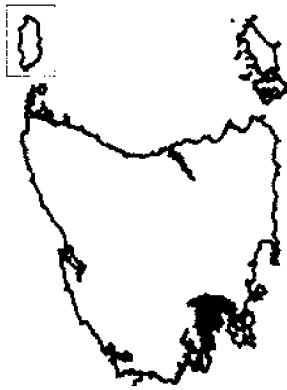
Statistical Divisions and selected Statistical Local Areas	Establish- ments	Guest rooms	Bed spaces	Employ- ment (persons)	Room nights occupied				Room occupancy rates (per cent)			
					July	Aug.	Sept.	Sept. qtr	July	Aug.	Sept.	Sept. qtr
Clarence (C)	4	54	153	64	714	537	698	1,949	42.7	32.1	43.1	39.2
Glenorchy (C)	7	174	443	127	1,765	1,744	2,677	6,186	32.7	32.3	51.3	38.6
Hobart (C) — Inner	6	431	1,076	210	8,154	6,588	8,326	23,068	61.0	49.3	64.4	58.2
Hobart (C) — Remainder	29	1,139	3,254	1,400	21,712	19,090	24,610	65,412	61.7	54.1	72.0	62.5
Balance	5	73	208	54	464	389	613	1,466	22.1	17.2	28.0	22.4
<i>Greater Hobart (SD)</i>	<i>51</i>	<i>1,871</i>	<i>5,134</i>	<i>1,855</i>	<i>32,809</i>	<i>28,348</i>	<i>36,924</i>	<i>98,081</i>	<i>56.8</i>	<i>48.9</i>	<i>65.8</i>	<i>57.1</i>
Glamorgan/Spring Bay (M)	9	294	1,022	143	2,252	2,249	3,084	7,585	24.7	24.7	35.0	28.0
Tasman (M)	6	136	415	90	1,103	1,076	1,967	4,146	26.2	25.5	48.2	33.1
Balance	8	151	381	50	501	713	673	1,887	10.7	15.2	14.9	13.6
<i>Southern (SD)</i>	<i>23</i>	<i>581</i>	<i>1,818</i>	<i>283</i>	<i>3,856</i>	<i>4,038</i>	<i>5,724</i>	<i>13,618</i>	<i>21.4</i>	<i>22.4</i>	<i>32.8</i>	<i>25.5</i>
Break O' Day (M)	5	161	419	85	949	955	1,269	3,173	19.0	19.1	26.3	21.4
Launceston (C) — Inner	10	468	1,326	345	6,757	7,061	8,468	22,286	46.6	48.7	60.3	51.8
Launceston (C) Pt. B	22	584	1,973	300	6,922	7,176	10,204	24,302	38.2	39.6	58.2	45.2
Northern Midlands (M) Pts. A and B	3	25	67	23	162	237	286	685	20.9	30.6	38.1	29.8
West Tamar (M) Pt. A	5	59	182	62	430	482	737	1,649	23.5	26.4	41.6	30.4
Balance	7	210	611	437	2,771	2,810	3,240	8,821	42.6	43.2	51.4	45.7
<i>Northern (SD)</i>	<i>52</i>	<i>1,507</i>	<i>4,578</i>	<i>1,252</i>	<i>17,991</i>	<i>18,721</i>	<i>24,204</i>	<i>60,916</i>	<i>38.5</i>	<i>40.1</i>	<i>53.5</i>	<i>43.9</i>
Burnie (C) Pt. A	7	221	574	137	2,389	2,462	2,667	7,518	34.9	35.9	40.2	37.0
Central Coast (M) Pt. A	5	114	279	119	836	880	999	2,715	23.7	24.9	29.2	25.9
Circular Head (M)	3	92	234	90	931	797	1,262	2,990	32.6	27.9	45.7	35.3
Devonport (C)	8	237	676	122	2,376	2,656	2,545	7,577	32.3	36.2	35.8	34.8
Waratah/Wynyard (M) Pts. A and B	8	145	397	62	660	657	967	2,284	14.7	14.6	22.2	17.1
West Coast (M)	10	395	1,155	166	2,355	2,446	3,951	8,752	19.2	20.0	33.3	24.1
Balance	7	153	561	135	2,592	2,407	3,005	8,004	54.6	50.7	65.5	56.9
<i>Mersey-Lyell (SD)</i>	<i>48</i>	<i>1,357</i>	<i>3,876</i>	<i>831</i>	<i>12,139</i>	<i>12,305</i>	<i>15,396</i>	<i>39,840</i>	<i>28.9</i>	<i>29.3</i>	<i>37.8</i>	<i>31.9</i>
<i>Total Tasmania</i>	<i>174</i>	<i>5,316</i>	<i>15,406</i>	<i>4,221</i>	<i>66,795</i>	<i>63,412</i>	<i>82,248</i>	<i>212,455</i>	<i>40.6</i>	<i>38.5</i>	<i>51.6</i>	<i>43.5</i>

AND SELECTED STATISTICAL LOCAL AREAS, TASMANIA, SEPTEMBER QUARTER 1994

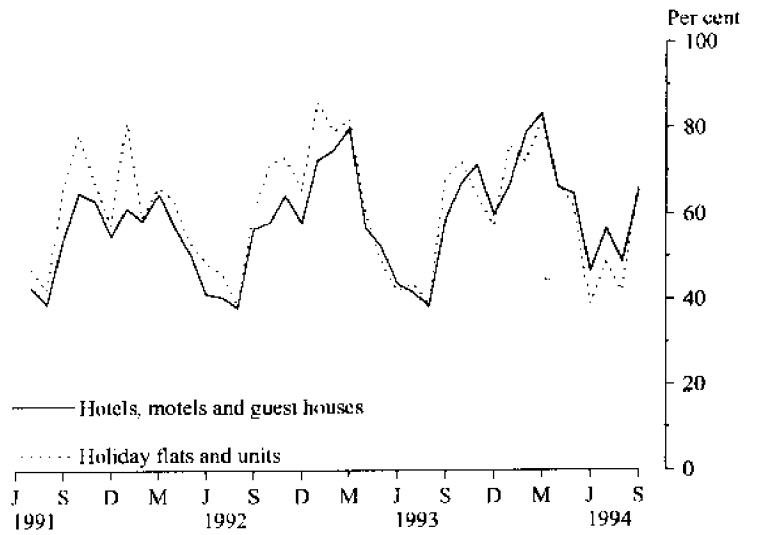
<i>Guest nights</i>				<i>Guest arrivals</i>				<i>Takings from accommodation (\$'000)</i>			
<i>July</i>	<i>Aug.</i>	<i>Sept.</i>	<i>Sept. qtr</i>	<i>July</i>	<i>Aug.</i>	<i>Sept.</i>	<i>Sept. qtr</i>	<i>July</i>	<i>Aug.</i>	<i>Sept.</i>	<i>Sept. qtr</i>
1,200	954	1,390	3,544	581	560	940	2,081	35	34	42	112
2,868	2,657	4,633	10,158	1,604	1,556	2,332	5,492	72	77	122	272
13,526	10,575	13,255	37,356	5,738	4,841	5,889	16,468	558	432	567	1,557
36,126	30,708	40,446	107,280	15,125	13,507	16,838	45,470	1,789	1,604	2,178	5,571
821	605	1,114	2,540	497	406	673	1,576	27	22	39	88
<i>54,541</i>	<i>45,499</i>	<i>60,838</i>	<i>160,878</i>	<i>23,545</i>	<i>20,870</i>	<i>26,672</i>	<i>71,087</i>	<i>2,481</i>	<i>2,170</i>	<i>2,949</i>	<i>7,600</i>
4,566	4,391	6,785	15,742	3,275	2,914	5,025	11,214	122	118	169	410
2,413	2,261	4,738	9,412	2,086	1,917	3,791	7,794	66	59	121	245
817	1,075	1,158	3,050	623	644	746	2,013	33	28	36	98
<i>7,796</i>	<i>7,727</i>	<i>12,681</i>	<i>28,204</i>	<i>5,984</i>	<i>5,475</i>	<i>9,562</i>	<i>21,021</i>	<i>221</i>	<i>205</i>	<i>327</i>	<i>752</i>
1,731	1,675	2,388	5,794	1,245	1,358	1,826	4,429	40	42	54	136
10,122	10,386	13,396	33,904	5,855	6,115	7,817	19,787	468	501	619	1,588
13,010	13,094	21,126	47,230	6,793	7,630	10,869	25,292	388	407	630	1,425
247	332	439	1,018	146	191	227	564	5	7	9	21
798	862	1,432	3,092	589	644	918	2,151	19	21	33	74
4,779	4,895	5,661	15,335	2,215	2,252	2,181	6,648	249	262	338	849
<i>30,687</i>	<i>31,244</i>	<i>44,442</i>	<i>106,373</i>	<i>16,843</i>	<i>18,190</i>	<i>23,838</i>	<i>58,871</i>	<i>1,169</i>	<i>1,240</i>	<i>1,684</i>	<i>4,093</i>
2,924	3,054	3,609	9,587	2,140	2,362	2,649	7,151	147	154	162	463
1,138	1,265	1,533	3,936	700	653	741	2,094	41	42	49	132
1,424	1,218	2,077	4,719	998	915	1,433	3,346	44	36	64	145
3,495	4,008	3,954	11,457	2,488	2,742	2,775	8,005	160	179	168	508
1,109	1,195	1,744	4,048	773	819	1,228	2,820	32	32	49	112
4,228	4,089	7,528	15,845	2,758	2,691	4,843	10,292	147	175	304	625
5,663	4,801	6,639	17,103	3,054	2,718	4,003	9,775	268	211	319	798
<i>19,981</i>	<i>19,630</i>	<i>27,084</i>	<i>66,695</i>	<i>12,911</i>	<i>12,900</i>	<i>17,672</i>	<i>43,483</i>	<i>840</i>	<i>829</i>	<i>1,115</i>	<i>2,783</i>
<i>113,005</i>	<i>104,100</i>	<i>145,045</i>	<i>362,150</i>	<i>59,283</i>	<i>57,435</i>	<i>77,744</i>	<i>194,462</i>	<i>4,711</i>	<i>4,443</i>	<i>6,074</i>	<i>15,229</i>

MONTHLY ROOM/UNIT OCCUPANCY RATES

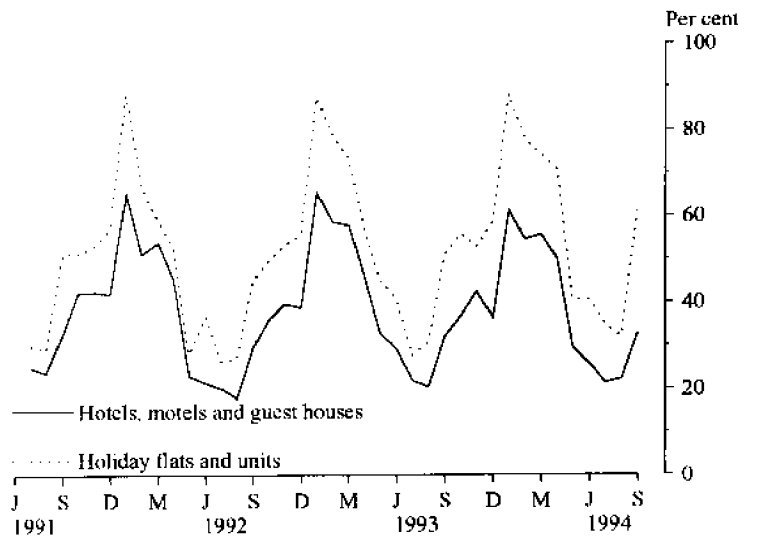
Graphs on these pages compare room occupancy rates for hotels, motels and guest houses with facilities with unit occupancy rates for holiday unit establishments for each Statistical Division and the East Coast Tourist area.



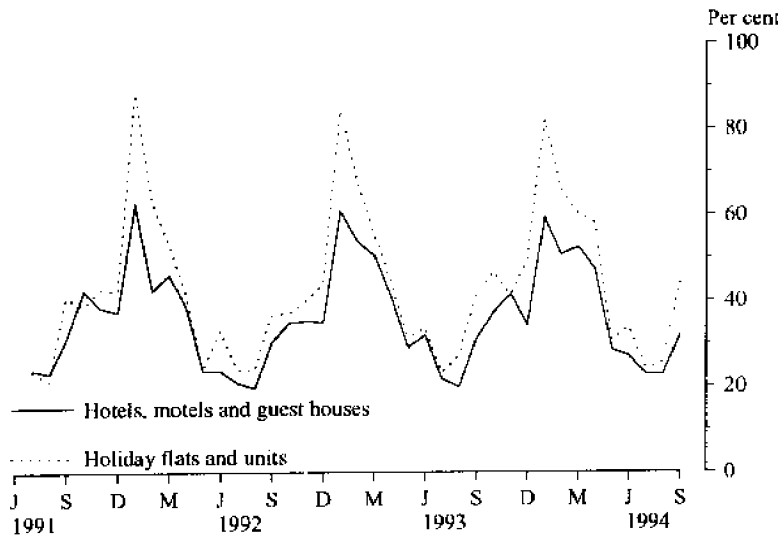
GREATER HOBART STATISTICAL DIVISION



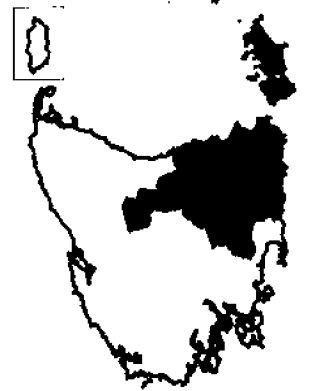
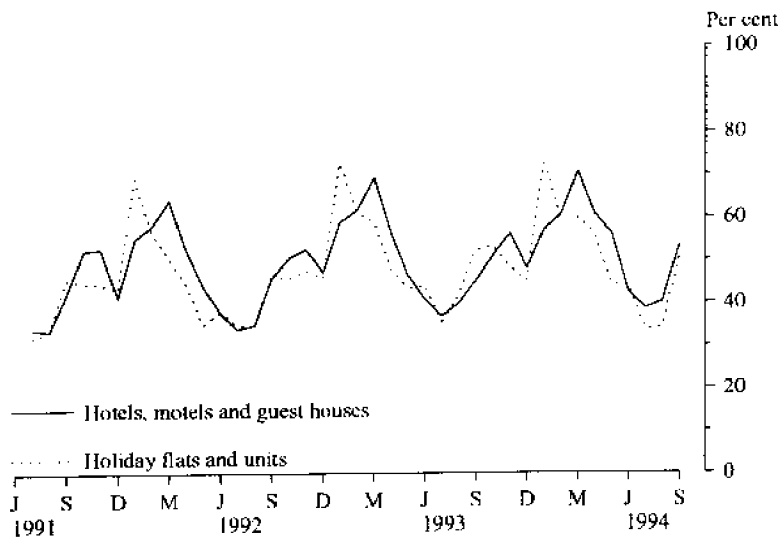
SOUTHERN STATISTICAL DIVISION



EAST COAST TOURIST AREA



NORTHERN STATISTICAL DIVISION



MERSEY-LYELL STATISTICAL DIVISION

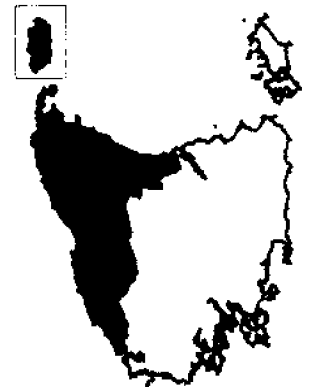
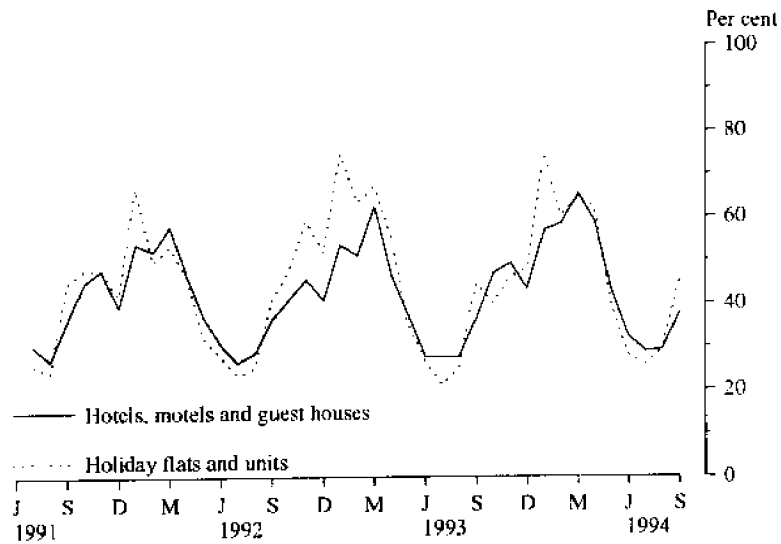


TABLE 10 — HOLIDAY FLATS, UNITS AND HOUSES BY STATISTICAL DIVISION AND SELECTED STATISTICAL AREAS, TASMANIA

Particulars	Northern (SD)				Total	Mersey-Lyell (SD)	Total Tasmania	East Coast (a)
	Greater Hobart (SD)	Southern (SD)	Greater Launceston and Central North (SSDs)	North Eastern (SSD)				
LETTING ENTITIES, CAPACITY AND EMPLOYMENT								
September quarter 1993								
Letting entities	11	9	7	6	13	12	45	10
Flats, units and houses								
Single bedroom	46	17	110	26	136	26	225	37
Multiple bedroom	159	80	105	64	169	93	501	88
Total flats, units and houses	205	97	215	90	305	119	726	125
Bed spaces	876	509	790	453	1,243	561	3,189	591
Employment (persons)	56	48	114	28	142	37	283	52
September quarter 1994—								
Letting entities	13	9	9	7	16	15	53	11
Flats, units and houses								
Single bedroom	56	17	117	30	147	44	264	41
Multiple bedroom	174	80	115	71	186	100	540	95
Total flats, units and houses	230	97	232	101	333	144	804	136
Bed spaces	1,020	509	862	477	1,339	665	3,533	638
Employment (persons)	68	43	121	30	151	43	305	51
UNIT NIGHTS OCCUPIED								
September quarter 1993	9,444	3,241	10,055	2,042	12,097	3,298	28,080	3,487
1994—								
July	3,470	1,050	2,911	568	3,479	1,158	9,157	1,023
August	2,974	961	2,933	592	3,525	1,287	8,747	1,078
September	4,656	1,784	4,261	786	5,047	1,895	13,382	1,796
September quarter 1994	11,100	3,795	10,105	1,946	12,051	4,340	31,286	3,897
UNIT OCCUPANCY RATES (per cent)								
September quarter 1993	50.1	36.3	50.8	24.7	43.1	30.1	42.0	30.3
1994—								
July	48.7	34.9	40.5	18.1	33.7	25.9	36.7	24.3
August	41.7	32.0	40.8	18.9	34.1	29.5	35.2	25.6
September	67.5	61.3	61.2	25.9	50.5	45.8	55.9	44.0
September quarter 1994	52.5	42.5	47.3	20.9	39.3	33.5	42.5	31.1
UNIT LETTINGS								
September quarter 1993	2,660	2,028	5,073	821	5,894	1,670	12,252	1,790
1994—								
July	967	701	1,608	254	1,862	545	4,075	562
August	829	621	1,706	296	2,002	580	4,032	596
September	1,475	1,212	2,302	415	2,717	1,031	6,435	1,083
September quarter 1994	3,271	2,534	5,616	965	6,581	2,156	14,542	2,241
AVERAGE LENGTH OF STAY (days)								
September quarter 1993	3.6	1.6	2.0	2.5	2.1	2.0	2.3	1.9
1994—								
July	3.6	1.5	1.8	2.2	1.9	2.1	2.2	1.8
August	3.6	1.5	1.7	2.0	1.8	2.2	2.2	1.8
September	3.2	1.5	1.9	1.9	1.9	1.8	2.1	1.7
September quarter 1994	3.4	1.5	1.8	2.0	1.8	2.0	2.2	1.7
TAKINGS FROM ACCOMMODATION (\$'000)								
September quarter 1993	559	219	653	97	750	166	1,694	218
1994—								
July	222	73	206	26	232	56	583	65
August	189	66	210	26	236	59	550	65
September	313	141	319	36	356	102	911	121
September quarter 1994	724	280	736	89	824	217	2,044	250

(a) The East Coast Tourist Area comprises Glamorgan/Spring Bay (M) and Break O'Day (M).

TABLE 11 — CARAVAN PARKS BY STATISTICAL DIVISION AND SELECTED STATISTICAL AREAS, TASMANIA

Particulars	Northern (SD)							East Coast (a)
	Greater Hobart (SD)	Southern (SD)	Greater Launceston and Central North (SSDs)	North Eastern (SSD)	Total	Mersey-Iyell (SD)	Total Tasmania	
ESTABLISHMENTS, CAPACITY AND EMPLOYMENT								
<i>September quarter 1993</i>								
Establishments	8	16	11	8	19	24	67	10
Capacity								
On-site vans	77	57	59	27	86	171	391	57
Other powered sites	307	655	509	504	1,013	1,310	3,285	535
Unpowered sites	262	324	531	639	1,170	551	2,307	474
Cabins, flats, etc.	57	102	61	15	76	148	383	59
<i>Total capacity</i>	<i>703</i>	<i>1,138</i>	<i>1,160</i>	<i>1,185</i>	<i>2,345</i>	<i>2,180</i>	<i>6,366</i>	<i>1,125</i>
Sites occupied by long-term guests	82	18	103	10	113	172	385	23
Other sites permanently reserved	13	295	96	295	391	199	898	331
Employment (persons)	26	53	28	21	49	70	198	35
<i>September quarter 1994</i>								
Establishments	8	18	12	8	20	29	75	11
Capacity								
On-site vans	77	68	53	23	76	164	385	57
Other powered sites	307	787	501	516	1,017	1,474	3,585	647
Unpowered sites	262	388	562	631	1,193	669	2,512	530
Cabins, flats, etc.	62	117	70	20	90	173	442	76
<i>Total capacity</i>	<i>708</i>	<i>1,360</i>	<i>1,186</i>	<i>1,190</i>	<i>2,376</i>	<i>2,480</i>	<i>6,924</i>	<i>1,310</i>
Sites occupied by long-term guests	90	30	83	7	90	234	444	32
Other sites permanently reserved	11	325	98	283	381	283	1,000	355
Employment (persons)	31	64	35	20	55	82	232	39
SITE NIGHTS OCCUPIED								
<i>September quarter 1993</i>	<i>14,367</i>	<i>33,795</i>	<i>24,087</i>	<i>31,136</i>	<i>55,223</i>	<i>45,558</i>	<i>148,943</i>	<i>37,075</i>
<i>1994</i>								
July	4,866	12,210	7,094	9,757	16,851	19,218	53,145	13,206
August	5,608	12,137	7,109	9,966	17,075	19,204	54,024	13,235
September	5,666	13,713	8,063	9,750	17,813	19,834	57,026	14,254
<i>September quarter 1994</i>	<i>16,140</i>	<i>38,060</i>	<i>22,266</i>	<i>29,473</i>	<i>51,739</i>	<i>58,256</i>	<i>164,195</i>	<i>40,695</i>
SITE OCCUPANCY RATES (per cent)								
<i>September quarter 1993</i>	<i>22.2</i>	<i>32.3</i>	<i>22.6</i>	<i>28.6</i>	<i>25.6</i>	<i>22.7</i>	<i>25.4</i>	<i>35.8</i>
<i>1994</i>								
July	22.2	29.0	19.3	26.4	22.9	25.0	24.8	32.5
August	25.6	28.8	19.3	27.0	23.2	25.0	25.2	32.6
September	26.7	33.6	22.7	27.3	25.0	26.7	27.5	36.3
<i>September quarter 1994</i>	<i>24.8</i>	<i>30.4</i>	<i>20.4</i>	<i>26.9</i>	<i>23.7</i>	<i>25.5</i>	<i>25.8</i>	<i>33.8</i>
TAKINGS FROM ACCOMMODATION (\$'000)								
<i>September quarter 1993</i>	<i>198</i>	<i>175</i>	<i>189</i>	<i>57</i>	<i>246</i>	<i>377</i>	<i>996</i>	<i>169</i>
<i>1994</i>								
July	58	46	49	17	65	125	294	44
August	56	49	52	18	70	128	303	46
September	78	111	76	25	101	149	439	101
<i>September quarter 1994</i>	<i>191</i>	<i>206</i>	<i>177</i>	<i>59</i>	<i>236</i>	<i>402</i>	<i>1,036</i>	<i>191</i>

(a) The East Coast Tourist Area comprises Glamorgan/Spring Bay (M) and Break O' Day (M).

TABLE 12 — VISITOR HOSTELS BY STATISTICAL DIVISION, TASMANIA

<i>Particulars</i>	<i>Greater Hobart (SD) and Southern (SD)</i>	<i>Northern (SD)</i>	<i>Mersey-Lyell (SD)</i>	<i>Total Tasmania</i>
ESTABLISHMENTS, CAPACITY AND EMPLOYMENT				
<i>September quarter 1993—</i>				
Establishments	19	10	9	38
Bed spaces	633	306	491	1,430
Employment (persons)	36	16	25	77
<i>September quarter 1994</i>				
Establishments	23	9	9	41
Bed spaces	855	295	562	1,712
Employment (persons)	59	15	21	95
GUEST NIGHTS				
<i>September quarter 1993</i>	4,620	1,041	2,625	8,286
<i>1994—</i>				
July	2,242	390	552	3,184
August	2,296	393	408	3,097
September	2,800	668	2,650	6,118
<i>September quarter 1994</i>	7,338	1,451	3,610	12,399
BED OCCUPANCY RATES (per cent)				
<i>September quarter 1993</i>	8.4	3.7	5.8	6.5
<i>1994</i>				
July	8.5	4.3	3.2	6.0
August	8.7	4.3	2.6	6.0
September	10.9	7.5	15.7	11.9
<i>September quarter 1994</i>	9.3	5.3	7.2	8.0
GUEST ARRIVALS				
<i>September quarter 1993</i>	2,671	743	2,040	5,454
<i>1994—</i>				
July	1,369	306	491	2,166
August	1,300	230	323	1,853
September	1,867	479	1,153	3,499
<i>September quarter 1994</i>	4,536	1,015	1,967	7,518
AVERAGE LENGTH OF STAY (days)				
<i>September quarter 1993</i>	1.7	1.4	1.3	1.5
<i>1994—</i>				
July	1.6	1.3	1.1	1.5
August	1.8	1.7	1.3	1.7
September	1.5	1.4	2.3	1.7
<i>September quarter 1994</i>	1.6	1.4	1.8	1.6
TAKINGS FROM ACCOMMODATION (\$'000)				
<i>September quarter 1993</i>	54	9	24	87
<i>1994—</i>				
July	28	4	8	40
August	28	4	6	37
September	36	6	26	68
<i>September quarter 1994</i>	92	13	39	145

**TABLE 13. PASSENGER ARRIVALS AND DEPARTURES, TASMANIA,
INTERSTATE AND INTERNATIONAL (a)(d)**
(Source: Tourism, Sport & Recreation)

Period	Arrivals			Total	Departures (b)	Cruise Ships (c)	
	By air		By sea			Arrivals	Departures
	Interstate	International					
1986	524,342	10,136	95,139	629,617	628,245	n.a.	n.a.
1987	526,517	9,446	88,343	624,306	626,297	7,398	6,745
1988	571,344	8,625	101,572	681,541	683,635	5,497	6,161
1989	449,481	8,489	118,646	576,616	591,152	4,149	4,149
1990	555,631	8,629	120,004	684,264	679,833	3,255	3,255
1991	625,366	5,897	131,375	762,638	764,731	6,720	6,663
1992	652,092	4,428	114,969	771,489	761,109	4,608	4,608
1993	694,244	5,144	115,381	814,769	814,835	2,033	2,033
1992-							
April	59,254	389	12,178	71,821	74,902	-	-
May	44,058	424	5,541	50,023	58,249	-	-
June	46,293	307	5,754	52,354	49,661	-	-
July	46,957	210	5,156	52,323	54,820	-	-
August	42,044	335	4,899	47,278	51,723	-	-
September	58,021	427	10,288	68,736	55,890	-	-
October	56,678	408	8,454	65,540	64,890	-	-
November	52,044	296	8,625	60,965	59,016	-	-
December	65,339	385	16,538	82,262	66,297	-	-
1993-							
January	71,801	513	15,475	87,789	107,018	150	150
February	60,624	656	12,278	73,558	65,492	697	697
March	57,002	449	13,040	70,491	73,559	586	586
April	62,846	340	12,083	75,269	80,402	-	-
May	45,373	451	5,741	51,565	61,725	-	-
June	51,154	258	6,067	57,479	54,776	-	-
July	45,868	523	4,855	51,246	53,956	-	-
August	45,988	357	4,553	50,898	55,644	-	-
September	62,578	379	9,415	72,372	58,126	-	-
October	57,362	434	7,965	65,761	65,042	-	-
November	59,592	393	8,561	68,546	66,733	-	-
December	74,056	391	15,348	89,795	72,362	600	600
1994-							
January	73,470	473	12,536	86,479	103,610	1,596	1,596
February	63,506	413	12,324	76,243	69,690	2,470	2,470
March	66,848	414	13,054	80,316	85,030	1,064	1,064
April	62,519	502	11,732	74,753	78,095	-	-
May	50,076	242	8,151	58,469	70,924	-	-
June	52,737	167	7,629	60,533	56,244	-	-
July	52,995	186	6,983	60,164	63,737	-	-
August	p 50,549	250	7,199	p 57,998	p 62,079	-	-
September	p 69,138	340	13,430	p 82,908	p 66,659	-	-

(a) The following persons are not included in these statistics : passengers under three years of age accompanied by an adult ; passengers travelling on chartered flights with minor carriers ; passengers travelling on private or VIP flights.

(b) The proportion of departing passengers who were visitors was shown to be about 58 per cent in the 1981 Tasmanian Visitor Survey, around 55 per cent in the 1984 TVS, about 53 per cent in the 1986 TVS, nearly 60 per cent in the 1988 TVS, close to 65 per cent in the 1990 TVS, almost 58 per cent in the 1991 TVS, almost 55 per cent in the 1992 TVS, and just over 58 per cent in the 1993 TVS.

(c) Cruise ship statistics were not collected before November 1986 and are not included in Total Arrivals and Total Departures.

(d) The domestic airline pilots dispute commenced on 18 August 1989 with the pilots working restricted hours (9 a.m to 5 p.m). The pilots were suspended on 23 August 1989.

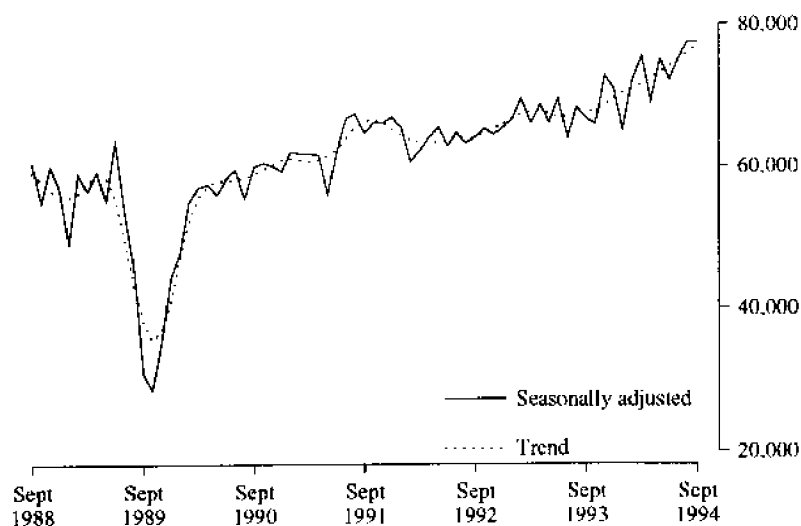
**TABLE 14. TOTAL PASSENGER ARRIVALS BY AIR AND SEA INTO TASMANIA :
SEASONALLY ADJUSTED AND TREND SERIES (a)(b)**

<i>Period</i>	<i>Original</i>	<i>Seasonally adjusted (a)</i>	<i>Trend</i>
<i>September 1986</i>	51,760	51,945	52,020
<i>1987</i>	56,502	50,885	52,612
<i>1988</i>	67,338	60,705	59,313
<i>1989</i>	33,703	30,811	38,241
<i>1990</i>	65,655	59,988	58,959
<i>1991</i>	70,960	64,541	66,293
<i>1992</i>	68,736	64,100	64,136
<i>1993</i>	72,372	66,639	67,385
<i>1994</i>	82,908	77,466	76,877
<i>1992-</i>			
<i>July</i>	52,323	64,683	64,038
<i>August</i>	47,278	63,246	64,050
<i>September</i>	68,736	64,100	64,136
<i>October</i>	65,540	65,235	64,517
<i>November</i>	60,965	64,334	65,199
<i>December</i>	82,262	65,418	65,953
<i>1993-</i>			
<i>January</i>	87,789	66,589	66,714
<i>February</i>	73,558	69,583	67,313
<i>March</i>	70,491	66,074	67,607
<i>April</i>	75,269	68,587	67,637
<i>May</i>	51,565	66,034	67,322
<i>June</i>	57,479	69,510	66,870
<i>July</i>	51,246	63,895	66,753
<i>August</i>	50,898	68,231	66,987
<i>September</i>	72,372	66,639	67,385
<i>October</i>	65,761	65,813	67,991
<i>November</i>	68,546	72,648	68,740
<i>December</i>	89,795	70,896	69,538
<i>1994-</i>			
<i>January</i>	86,479	65,011	70,304
<i>February</i>	76,243	72,066	70,932
<i>March</i>	80,316	75,487	71,584
<i>April</i>	74,753	68,991	72,304
<i>May</i>	58,469	75,071	73,225
<i>June</i>	60,533	72,090	74,193
<i>July</i>	60,164	75,220	75,132
<i>August</i>	p 57,998	p 77,344	p 76,023
<i>September</i>	p 82,908	p 77,466	p 76,877

(a) There is an annual recalculation of seasonal adjustment factors to include the most recent year's arrivals. This occurs at the end of each financial year and may cause revisions to previously-published seasonally-adjusted and trend figures, as can be seen in Table 11. A full printout of seasonally-adjusted and trend series figures dating back to 1971 can be obtained through the publication officer for this publication (Eddie Oakford).

(b) The domestic airline dispute commenced on 18 August 1989 with the pilots working restricted hours (9 a.m. to 5 p.m). The pilots were suspended on 23 August 1989.

TOTAL ARRIVALS IN TASMANIA



EXPLANATORY NOTES

INTRODUCTION	<p>1 This publication contains data for Tasmania from a quarterly survey of tourist accommodation establishments. The period covered by the latest survey is the 3 months ended 30 September 1994.</p>
SCOPE	<p>2 Tourist accommodation establishments currently included in the survey comprise two groups:</p> <ul style="list-style-type: none"> • Establishments which provide predominantly short-term accommodation (i.e. for periods of less than 2 months) to the general public. These include: <ul style="list-style-type: none"> <i>Hotels, motels and guest houses, with facilities</i> being hotels licensed to operate a public bar and motels, private hotels and guest houses all of which provide a bath (or shower) and toilet in most guest rooms and have breakfast available for guests. NOTE: From December quarter 1993, hotel, motel and guest house establishments with fewer than five rooms have been formally excluded from the scope of this statistical collection. This change in scope resulted in the exclusion of 13 establishments which in the September quarter 1993 Survey aggregates for Tasmania represented 6.8 per cent of hotel, motel and guest house establishments but accounted for only 0.7 per cent or less of accommodation capacity, occupancy and takings respectively. <i>Holiday flats, units and houses</i> (excluding establishments predominantly operated on a time share basis) which are operated by owners or managers who have sole letting rights to at least five flats, units or houses or by real estate agents for short-term letting. They are mainly self-contained in terms of cooking, bath (or shower) and toilet facilities and do not have breakfast available for guests. Data for holiday flats, units and houses include short-term owner occupation as well as paying guest occupation. <i>Visitor hostels</i> which provide accommodation to visitors on a bed basis (rather than by the room). This category does not include establishments providing charity type accommodation (e.g. Salvation Army hostels) nor hotels, motels and guest houses without in-room facilities which provide accommodation on a per room basis. • <i>Caravan parks</i> which provide either predominantly short-term (i.e. for periods of less than 2 months) or predominantly long-term (i.e. for periods of 2 months or more) accommodation to the general public and which provide powered sites for caravans and toilet, shower and laundry facilities for guests. <p>3 Data collected and published for each type of establishment (other than holiday flats, units and houses) include both long-term and short-term guests at these establishments.</p> <p>4 Establishments which provide more than one type of accommodation (e.g. a motel with attached caravan park) are treated as two or more separate establishments. However, self-contained units, flats, cabins, etc. attached to hotels, motels or to caravan parks are included in the capacity for those establishments and not treated as separate holiday flat, unit or house establishments.</p>
DEFINITIONS	<p>5 <i>Number of establishments.</i> For hotels, motels and guest houses, caravan parks and visitor hostels, the number of establishments within the scope of the survey which operated for any part of the survey period, or which closed temporarily for the quarter for seasonal reasons.</p> <p>6 <i>Number of letting entities.</i> For holiday flats, units and houses, the number of owners, managers or real estate agents within the scope of the survey who operated for any part of the survey period.</p> <p>7 Capacity in terms of <i>Guest rooms, Bed spaces, Holiday units</i> or <i>Caravan park sites, etc.</i> is the maximum number available to accommodate paying guests during the survey period. Capacity closed temporarily for seasonal reasons is included.</p> <p>8 <i>Bed spaces.</i> Three-quarter beds are counted as one bed space; double beds as two bed spaces. Cots are excluded.</p> <p>9 <i>Total caravan park capacity</i> comprises <i>On-site vans, Other powered sites, Unpowered sites</i> and <i>Cabins, etc.</i></p>

EXPLANATORY NOTES—continued

DEFINITIONS—continued

10 *Room nights available.* The number of guest rooms available multiplied by the number of days for which they were available during the survey period. Includes operating periods only for establishments closing (other than for seasonal reasons) or opening during the survey period.

11 Occupancy in terms of *Room nights*, *Unit nights* or *Site nights occupied* refers to the total number of nights each guest room, holiday unit or caravan park site, etc. was occupied during the survey period.

NOTE: From September quarter 1992, caravan park sites, etc. permanently reserved for 2 months or more at the end of the survey period but only casually occupied by their tenants have been recorded continuously as *Site nights occupied* irrespective of whether the tenants of individual sites were in residence on any particular night. (See also paragraph 14 below). Previously, usage of these sites was recorded as *Site nights occupied* only when their tenants were in the park. Total site occupancy rates from September quarter 1992 are therefore not comparable with those from previous quarters.

12 Occupancy in terms of *Guest nights* refers to the total number of nights each paying guest stayed during the survey period.

13 *Sites occupied by long-term guests.* The total number of sites, etc. occupied at the end of the survey period by guests who have stayed continuously for 2 months or more.

14 *Other sites permanently reserved.* The total number of powered and unpowered sites, on-site vans and cabins, etc. continuously let for 2 months or more by the end of the survey period to tenants who occupy the sites only on a casual or sporadic basis. Separate data for this item are available only from September quarter 1992.

15 *Occupancy rates* represent occupancy expressed as a percentage of total capacity available during the survey period – e.g.

$$\text{Room occupancy rate (\%)} \text{ for the period} = \frac{\text{Room nights occupied}}{(\text{Guest rooms}) \times (\text{No. of days in the period})} \times 100$$

providing that, for establishments closing (other than for seasonal reasons) or opening during the period, the denominator of the above expression includes only operating periods.

16 *Guest arrivals.* The total number of paying guests counted only on the first night they stayed at the accommodation establishment.

17 *Unit lettings.* The total number of times a holiday flat, unit or house was occupied by a new tenant, counted only on the first night it was occupied by the new tenant.

18 *Average length of stay* is expressed in number of days and calculated:

- for hotels, motels and guest houses and for visitor hostels, by dividing *Guest nights* by *Guest arrivals* and
- for holiday flats, units and houses, by dividing *Unit nights occupied* by *Unit lettings*.

19 *Takings from accommodation.* Revenue received from the provision of accommodation. Takings from meals are excluded. Takings from accommodation for each month generally represent the takings received during that month. Where payments are received in advance of, or after, the provision of accommodation to guests, the monthly figure for takings from accommodation may not necessarily bear a direct relationship to the number of guests accommodated during the month. Rental and storage fees paid to caravan parks for the keeping of private vans in parks are included in the takings of the month they are received.

20 *Star grading.* The grading of hotels and motels with facilities based on the classification system used by members of the Australian Automobile Association (AAA). The gradings are allocated according to a points system based on the amenities and facilities available to guests. Details of the grading scheme are contained in the RACV-RAASA members' publication *Accommodation Australia*, or the individual tour guides produced by members of the AAA. For the purpose of classifying establishments to a star

EXPLANATORY NOTES—*continued*

DEFINITIONS—*continued*

grading in this publication, 'half' star gradings are ignored (e.g. a two and a half star grading has been shown as two star).

21 *Employment.* The number of persons working at accommodation establishments at the end of the survey period (including working proprietors and those working on other than accommodation activities).

AUSTRALIAN STANDARD
GEOGRAPHICAL
CLASSIFICATION

22. Statistics presented in this publication have been classified according to the Australian Standard Geographical Classification (ASGC), Edition 2.4. This classification incorporates a number of hierarchic structures of geographic areas. The appropriate spatial units of the main structure of the ASGC used in this publication are:

Statistical Local Areas (SLAs), which are legal Local Government Areas or parts thereof, which serve as the smallest type of spatial unit considered appropriate for the presentation of statistics and which add, without gaps or overlaps, to;

Statistical Subdivisions (SSDs) which in turn represent another, higher hierarchic level and add, without gaps or overlaps, to;

Statistical Divisions (SDs) which in turn add, without gaps or overlaps, to;

Total Tasmania.

For more detailed information, refer to the ASGC (1216.0).

UNPUBLISHED STATISTICS

23 The ABS may make available on request certain unpublished tourist accommodation statistics. A charge may be made for this information.

RELATED PUBLICATIONS

24 Publications for Australia, and each State and Territory, are released by the respective offices of the ABS. Tourist accommodation statistics for past quarters are available on request.

25 Other ABS publications which may be of interest include:

Directory of Tourism Statistics (1130.0) (irregular; first and latest issue: 1991)

Overseas Arrivals and Departures, Australia (3401.0) (monthly)

Tourism Indicators Australia (8634.0) (quarterly)

Tourist Accommodation, Australia (8635.0) (quarterly)

26 Current publications produced by the ABS are listed in the *Catalogue of Publications and Products* (1101.0). The ABS also issues the *Publications Advice* (1105.0) on Tuesdays and Fridays which lists publications to be released in the next few days. Both the *Catalogue* and *Publications Advice* are available from any ABS office.

SYMBOLS AND
OTHER USAGES

n.a. not available

n.p. not available for publication but included in totals where applicable

r figure or series revised since previous issue

.. not applicable

— nil or rounded to zero

— break in continuity of the series (where drawn across a column between two consecutive figures)

27 Where figures have been rounded, discrepancies may occur between totals and the sums of the component items.

William P. McReynolds
Deputy Commonwealth Statistician and
Statistician of the State of Tasmania



For more information ...

The ABS publishes a wide range of statistics and other information on Australia's economic and social conditions. Details of what is available in various publications and other products can be found in the *ABS Catalogue of Publications and Products* available at all ABS Offices (see below for contact details).

Information Consultancy Service

Information tailored to special needs of clients can be obtained from the Information Consultancy Service available at ABS Offices (see Information Inquiries below for contact details).

National Dial-a-Statistic Line

0055 86 400

(Steadycam P/L: premium rate 25c/21.4 secs.)

This number gives 24-hour access, 365 days a year for a range of statistics.

Electronic Data Services

A large range of data is available via on-line services, diskette, magnetic tape, tape cartridge and CD ROM. For more details about our electronic data services, contact any ABS Office (see below).

Bookshops and Subscriptions

There are over 400 titles of various publications available from ABS bookshops in all ABS Offices (see below Bookshop Sales for contact details). The ABS also provides a subscription service through which nominated publications are provided by mail on a regular basis at no additional cost (telephone Publications Subscription Service toll free on 008 02 0608 Australia wide).

Sales and Inquiries

Regional Offices	Information Inquiries	Bookshop Sales
SYDNEY (02)	268 4611	268 4620
MELBOURNE (03)	615 7000	615 7829
BRISBANE (07)	222 6351	222 6350
PERTH (09)	360 5140	360 5307
ADELAIDE (08)	237 7100	237 7582
HOBART (002)	20 5800	20 5800
CANBERRA (06)	207 0326	207 0326
DARWIN (089)	43 2111	43 2111
National Office		
ACT (06)	252 6007	008 020 608

ABS Email Addresses

Keylink	STAT.INFO/ABS
X.400	(C:AU.A:TELMEMO,O:ABS,SN:INFO,FN:STAT)
Internet	STAT.INFO@ABS. TELEMEMO.AU



Information Services, ABS, PO Box 10, Belconnen ACT 2616

